

Viola

Lock the Door/Silver Stairs

Tabitha Justice & Maidens IV



Lock the Door/Silver Stairs

58



65



72



79



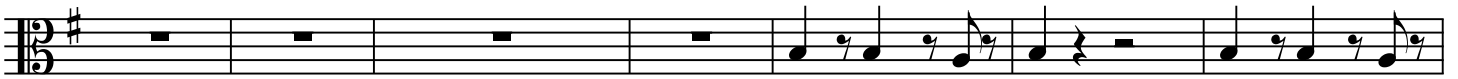
86



93



101



108



114



Lock the Door/Silver Stairs

119

Musical notation for measures 119-123, featuring a continuous eighth-note bass line in a key signature of one sharp (F#).

124

Musical notation for measures 124-128, continuing the eighth-note bass line.

129

Musical notation for measures 129-133, continuing the eighth-note bass line.

134

Musical notation for measures 134-138, including a dotted quarter note and eighth notes.

139

Musical notation for measures 139-144, featuring a mix of eighth and quarter notes.

145

Musical notation for measures 145-149, continuing the eighth-note bass line.

150

Musical notation for measures 150-157, including a four-measure guitar solo and a whole note chord progression.

158

A B E A B E

Musical notation for measures 158-166, showing a whole note chord progression: A, B, E, A, B, E.

167

A B E Em

Musical notation for measures 167-171, showing a whole note chord progression: A, B, E, Em, followed by eighth notes.

Lock the Door/Silver Stairs

173

D Em

178

183

188